

A Cross-System, Collaborative Treatment Model for Youth in Pierce County

**Kianna Carter, Youth Engagement Services Clinician, Mary Bridge  
Children's Hospital**

# BACKGROUND

---

In 2020 the Office of Superintendent of Public Instruction (OSPI) allocated \$8.1 million in federal Elementary and Secondary School Emergency Relief funds (ESSER funds) through the CARES Act to provide grants to community-based organizations (CBOs) to work in partnership with schools and school districts to support reopening efforts in the 2020-21 school year.

Youth Engagement Services program is a collaborative partnership between Mary Bridge Children's Hospital, Tacoma Public Schools/Sunmer Bonney Lake School District and Kids Mental Health Pierce County.

Objective: To provide behavioral health support services to TPS/SBLSD families when their children are at risk of harm to self/others, incarceration, inpatient psychiatric treatment or foster care due to underlying behavioral or mental health concerns.

# PROGRAM OVERVIEW

- A three-tiered approach will help identify students who are at risk of interrupted learning due to severe behavioral health risk factors by early identification and access to community stabilization services.
- YES Program services are scheduled in a tiered approach based on level of need.



Tier 1

Behavioral Health Navigation



Tier 2

Multidisciplinary Team  
Consultation



Tier 3

Brief Intervention

# TIER I: BEHAVIORAL HEALTH NAVIGATION

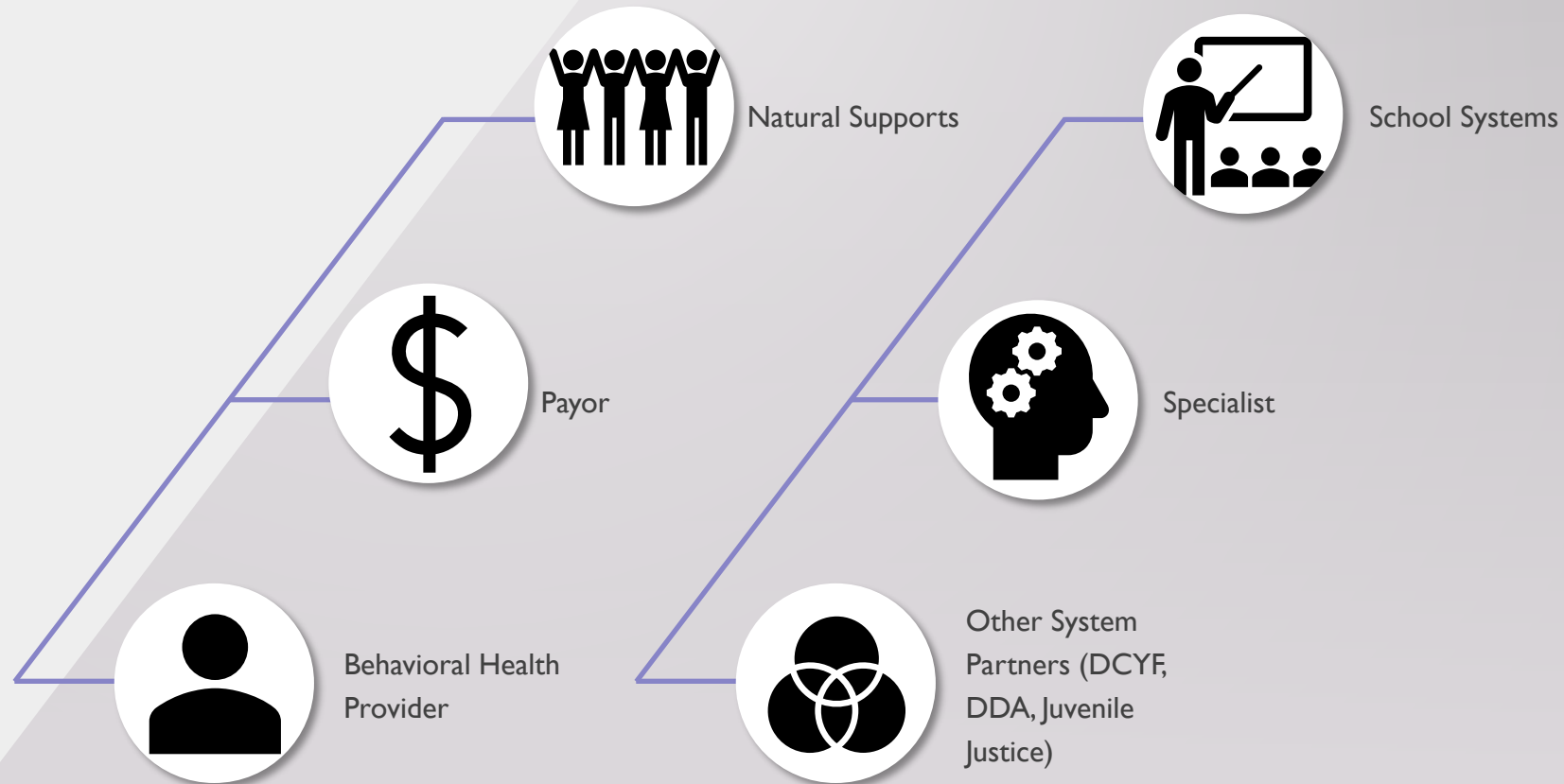
---

- Behavioral Health Navigation Behavioral Health Navigation will support students in identifying, coordinating and providing support in access behavioral health services.
- Within this service level a screening assessment will occur, and determination will be made regarding referral to more specific social or mental health support services and/or referral to a Community Multidisciplinary Team (MDT) or brief intervention.

# COMMUNITY MULTI-DISCIPLINARY TEAM MEETING



**Family-Centered**  
Community Collaboration



# TIER 2: MULTIDISCIPLINARY TEAM MEETING

---

The KMHPC MDT is a community-based, family-focused multidisciplinary team of community behavioral health providers, and advocates who aim to assist school personnel and families with complex behavioral health presentations, care coordination and case planning.

**The MDT assists with tasks such as:**

Outpatient Service Recommendations

Care Coordination

Behavior Management Strategies

Complex Safety Planning

Transitional planning

Discharge planning and

Family Engagement Strategies



# TIER 3: BRIEF THERAPEUTIC INTERVENTION

---

- Students with greatest needs will be referred to a YES clinician who will provide brief interventions for up to 90 days with the goal of developing a treatment plan that will provide the youth the necessary resources and supports to remain safe within their school and community.
- The YES clinician will conduct a student/ and or family assessment with the collaboration of the student and family, develop a family treatment plan aimed at stabilizing the mental health symptoms that are contributing to the youth's disruption in education and other functions.
- The YES clinician will provide brief interventions which could include one-on-one counseling, family sessions, and/or safety/crisis planning. Prior to case closure, the YES clinician will work with the student/and or family to develop a transitional plan to ensure connection to other community resources

# ELIGIBILITY & REFERRAL

---

Students ages 13 and up who have been identified by TPS/Sumner Bonney Lake school district personnel (counselors/teachers) as having a complex behavioral health presentation can be referred to the YES program via the Kids' Mental Health-Pierce County web portal.

**For this program, complex presentation will be defined as:**

- Youth with high-risk behaviors or risk factors such as self-harm
- Youth involved in two or more systems (juvenile justice, mental health, substance use disorder, foster care, etc.)
- Youth who have been identified as high utilizers of the crisis mental health system based on frequency of emergency department visits and inpatient hospitalizations
- Any other complex psychosocial presentation that would benefit from multidisciplinary team review

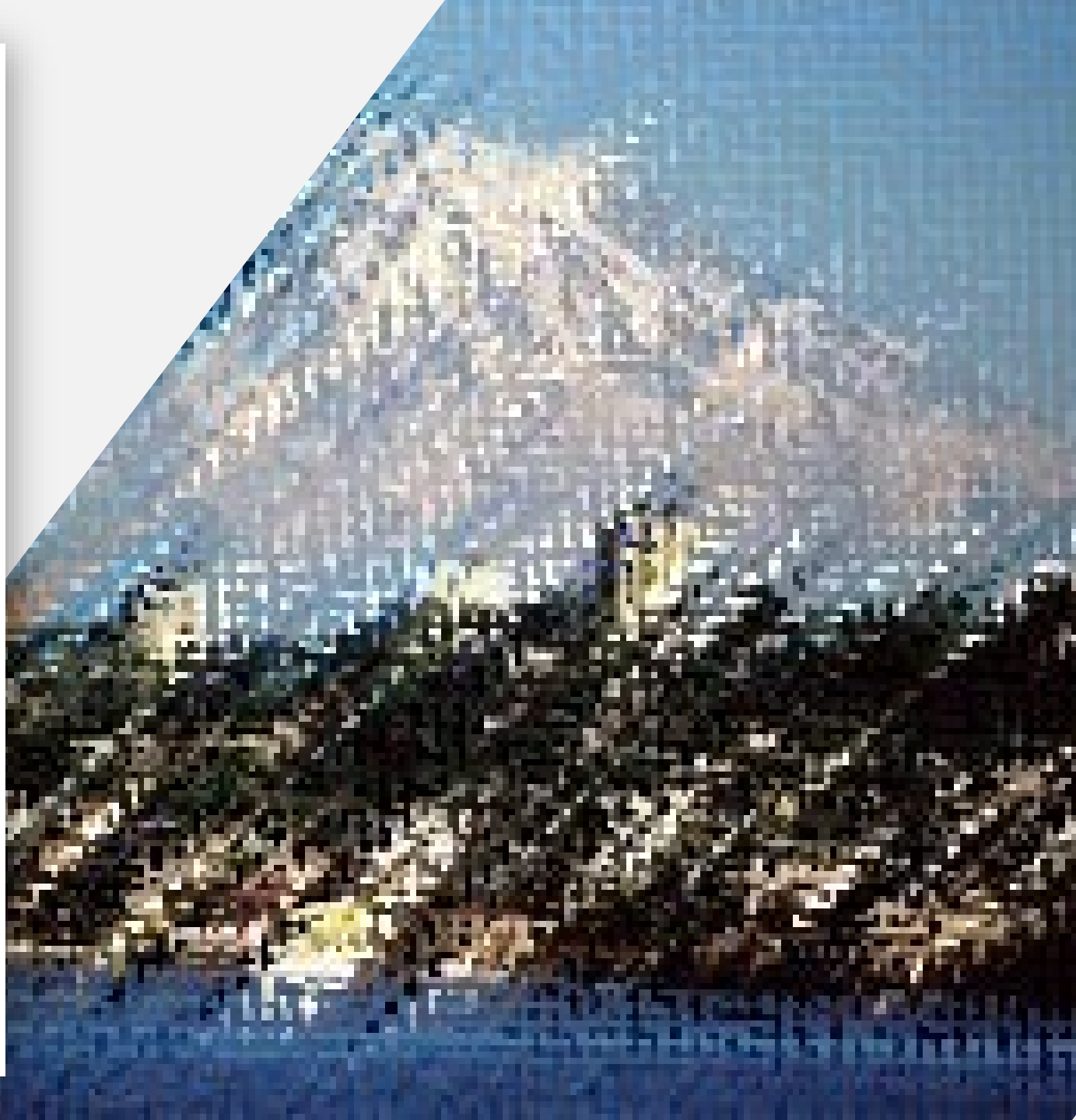


STUDENTS CAN BE REFERRED  
TO YES VIA THE KIDS' MENTAL  
HEALTH-PIERCE COUNTY  
(KMHPC) WEB PORTAL:  
[WWW.KIDSMENTALHEALTHPIERCECOUNTY.ORG](http://WWW.KIDSMENTALHEALTHPIERCECOUNTY.ORG)

REFERRALS ARE REVIEWED 5  
DAYS A WEEK DURING  
BUSINESS HOURS. RESPONSE  
TO REFERRAL REVIEW WILL BE  
WITHIN 2 BUSINESS DAYS OF  
REFERRAL.



**Kids'**  
**Mental Health**  
Pierce County



# THANK YOU

## **Program Contact Information:**

Kianna Carter, Youth Engagement Services Clinician  
[Kianna.carter@multicare.org](mailto:Kianna.carter@multicare.org)

Ashley Mangum, Director, Kids Mental Health Pierce  
County  
[Ashley.magnum@multicare.org](mailto:Ashley.magnum@multicare.org)

Website: [www.kidsmentalhealthpiercecouny.org](http://www.kidsmentalhealthpiercecouny.org)